


Regency
the first name in solid state[®]

BTH SERIES



BTH-201



BTH-202



BTH-204

The Original Low Cost/High Performance Action Radio

Low Cost . . . High Performance . . . that's the essence of the BTH. It's a pure, rugged, no frills radio designed to give you maximum return on your communications investment. You expect efficiency and economy from 2-way communications. And you get more of both from the efficient and economical 2-way radio, the BTH. Ask your Regency representative for details.

BTH-201
BTH-202

BTH-204

© 1976 
Regency
the first name in solid state[®]

COMMUNICATIONS, INC., 1227 S. Patrick Dr., Satellite Beach, Florida 32937

SPECIFICATIONS

GENERAL

Channels	
BTH-201	1
BTH-202	2
BTH-204	4
Frequency Range	150 to 162 MHz
Operating Temperature Range	-30° C to +60° C
Size	5 $\frac{5}{8}$ " x 2 $\frac{3}{16}$ " x 9"
Weight (including mike)	3 lbs., 13 oz.
Power	13.8 VDC
Receive (squelched)	120 MA
Receive (max. audio)	800 MA
Transmit	4 Amps
Antenna Impedence	50 Ω
Antenna Connector	UHF (SO-239 type)

RECEIVER

Sensitivity (20 db Quieting) ..	.35 μ V (nominal)
Selectivity Adjacent	
Channel	-50 db (70 or 80 db optional)
BTH-204	-70 db
Spurious Response (except	
primary image)	-60 db
Intermodulation Rejection ...	50 to 60 db
Modulation Acceptance	
Bandwidth	\pm 7 KHz
Operating Bandwidth	3 MHz
Audio output	3W @ 10% distortion, 5W max.
Frequency Stability	\pm .002%, -30° C to +60° C
FCC Certification	Part 15, Subpart C

TRANSMITTER

R.F. Power Output	20 Watts (min.) @ 13.8 VDC
Modulation Deviation	
Adjustment Range	0 to \pm 7 KHz
Spurious and Harmonic	
Suppression	57 db (min.)
Frequency Stability	\pm .0005%, -30° to +60° C
Operating Bandwidth	1.5 MHz
FCC Emission Designator	16F3
Heat Sink	Solid Copper $\frac{1}{8}$ " Thick
FCC Transmitter Type	
Acceptance	Parts 21, 81, 89, 91, 93

ACCESSORIES

MA-4	Shock mounting bracket, 5 $\frac{5}{8}$ " units	MA-66	70 db filter, factory installed
MA-10	Cigarette lighter plug DC power cord	MA-66	70 db filter, field installation
MA-13	Mounting bracket, 5 $\frac{5}{8}$ " units	MA-76	80 db filter, factory installed
MA-45	DC power cord replacement	MA-76	80 db filter, field installation
MA-59	Hand-held mike, 4 pin		

BTH Mobile Series . . . VHF/FM High Band

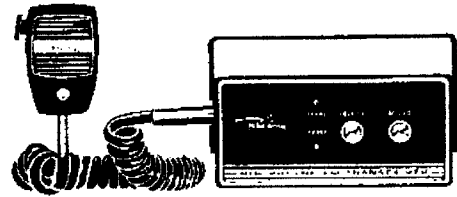
**REGENCY
TWO-WAY RADIO
HOW IT WORKS**

AND

**HOW IT CAN
WORK FOR
YOU**

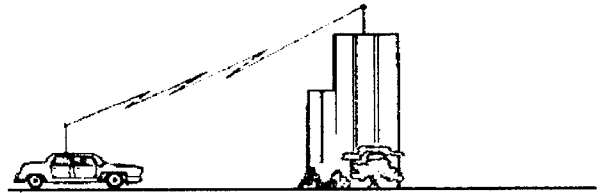
How it works.

Regency 2-way radio is practically as simple to use as a telephone. You just push a button on the microphone to call, then release it to wait for a reply.



You'll be transmitting and receiving on the very high or ultra high segments of the radio frequency bands. Talking on channels specifically set aside for the use of businesses, like yours. But more importantly, your Regency 2-way radio will be FM; which, compared to AM, means it's virtually free from noise and interference.

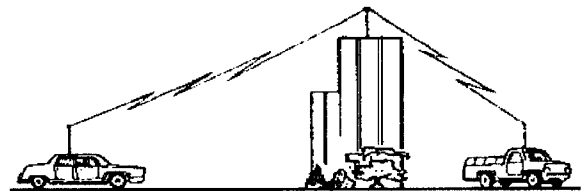
In many instances you'll want messages to flow to and from a central location, such as an office or shop.



The most efficient system for this circumstance is a base station with mobile units in the vehicles you want to contact.

But suppose you're on the go a lot, and want to be able to control things from your car. Or, you simply want the maximum possible communications range. A Regency repeater system could be the best solution in this case. The repeater will receive a message from your radio and literally repeat it to the other units, fixed or mobile, in your system.

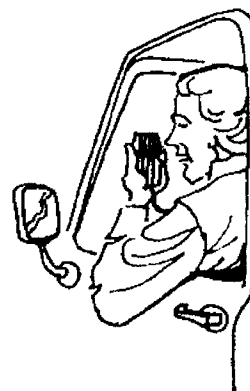
No matter which type of Regency system you choose though, you'll be getting a high return on your investment. You see, at Regency we build radios with just one goal;



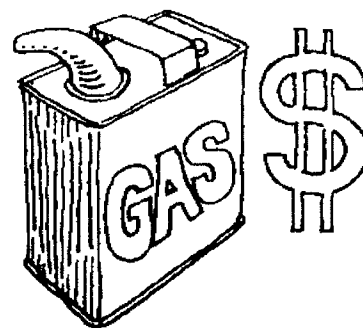
reliable communications. No frills. No expensive gimmicks. And when you think about it, isn't that all you really want in your business communications.

How it can work for you.

You and your employees may be constantly on the go. But with Regency 2-way radio you're never out of touch.



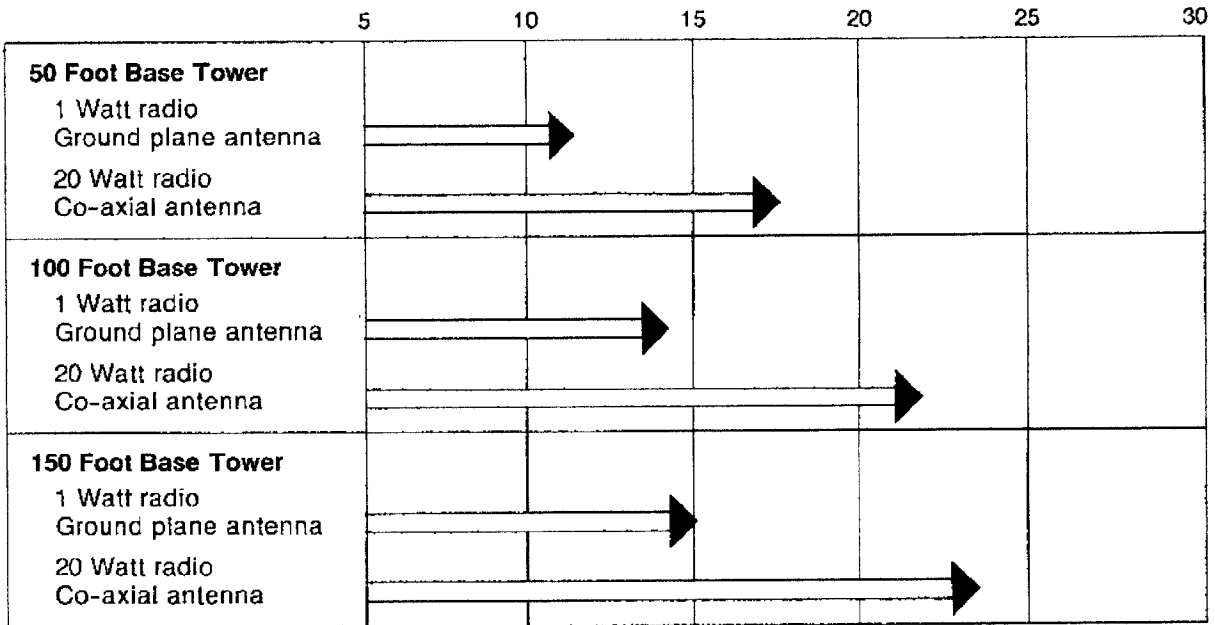
A government study has shown that three vehicles equipped with 2-way radio can do the same amount of work as four vehicles without 2-way radio. There are many ways Regency 2-way radio can bring this kind of efficiency to your business. For example: plans may change . . . a problem may arise . . . or a customer may call . . . Regency radio lets you handle these situations as they occur. There's no need for delays and wasted time, no need for backtracking or the wear and tear of unnecessary trips. Maintenance costs are reduced as each vehicle becomes more productive. Customers are satisfied with better and faster service. You can control your business more effectively and watch operating costs go down . . . while profits go up.



If you can't afford to pay for lost time, wasted gasoline and unnecessary vehicle wear in your business, then you really can't afford to be without Regency 2-way business radio. It's simply a good sound business investment.

How Much Range You Can Expect

Effective communications range is a function of power, antenna height, type of antenna and receiver sensitivity. Below are examples of typical ranges you can expect with varying combinations.



All ranges shown are **estimates** based upon average conditions. Individual systems may vary depending upon environmental and other factors. For example: range may increase in open, noncongested areas, and decrease in hilly, or more congested areas.

How Much You Can Expect To Save

Example: If your drivers lose 20 minutes each by telephoning the office, that's a loss of 2 hours per day. If it costs \$10 per hour to operate your trucks and pay drivers, your company can save up to \$5,000 per year by using Regency 2-Way Radio. Check the chart to see how much *you* can save!

		Costs Per Man Hour In Dollars									
		6	7	8	9	10	11	12	13	14	15
Potential Hourly Savings Per Day	1/h	1500	1750	2000	2250	2500	2750	3000	3250	3500	3750
	2/h	3000	3500	4000	4500	5000	5500	6000	6500	7000	7500
	3/h	4500	5250	6000	6750	7500	8250	9000	9750	10500	11250
	4/h	6000	7000	8000	9000	10000	11000	12000	13000	14000	15000
	5/h	7500	8750	10000	11250	12500	13750	15000	16250	17500	18750
	6/h	9000	10500	12000	13500	15000	16500	18000	19500	21000	22500

© 1977  COMMUNICATIONS, INC.
the best name in sound time

1227 S. Patrick Dr., Satellite Beach, Florida 32937